

1
Competitive Salaries

2
Paid Disability and Life Insurance

3
Reimbursement of Tuition



4
Retirement Pension Plan



Do you want to be a number?

At Greenwood Leflore Hospital, you'll be joining one of the top rural hospital staffs in Mississippi.

Whether your skills call for the intensity of the ICU, the fast pace of the emergency room, or the bedside challenges of floor duty, you'll be a valuable, respected part of the health care team. Your colleagues will be your neighbors and your friends, and they'll know you by name. You've worked hard to achieve your goals. Now it's time to make a difference, and Greenwood Leflore Hospital is the perfect place to do just that.



5
Sleeping Accommodations for Commuters

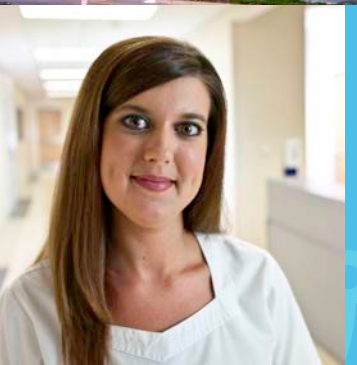


6
Employee Health Program



7
Full Time 36 Hours

8
Flexible Scheduling



9
Discounted Meals and Pharmacy



Or do you
want to be a NURSE?

GLH Nursing Opportunities

Sixteen-bed ICU includes 24/7 pulmonology coverage, cardiology, respiratory therapy, neurology/neurosurgery, gastrointestinal, urology, nephrology, etc.

Fifteen-bed ER staffed 24/7 with experienced physicians, nurse practitioners, RNs provide acute care of internal medical/surgical conditions, advanced cardiac life support and airway management. The ER is a Level IV Trauma Center, and home to the Delta Primary Stroke Center.

20-bed CARF-accredited inpatient rehab unit offers a unique opportunity for experience in both physical rehabilitation and medical surgical nursing. Patients receive nursing services, case management, physical therapy, occupational and speech therapy.

Medical surgical nursing is a challenging and rewarding experience. At GLH both of our medical surgical units offer a wide variety of services to gain experience across many specialties.

Second houses the OR, ICCU and Recovery Room.

Three East includes Post Partum, Labor & Delivery and the Newborn Nursery.

Four East is a behavioral health and holding unit.

Four West is a 30-bed unit that consists of cardiac, telemetry monitoring, renal, neurological, and general medical surgical.

Five West is a 27-bed unit that consists of post-operative, orthopedics, pediatrics, neurosurgery as well as general medical surgical patients.



Greenwood Leflore Hospital

www.glh.org / Telephone 882-453-0000 / email: humanresources@glh.org

Your hard work
has paid off.

You've earned
your degree.

Now you have
a choice: